

# m-SASSS

Modified Stoke Ankylosing Spondylitis Spinal Score, a composite index characterizing radiologic changes in the spine of patients with ankylosing spondylitis



Ankylosing Spondylitis International Federation

Name: \_\_\_\_\_

Date: \_\_\_\_\_

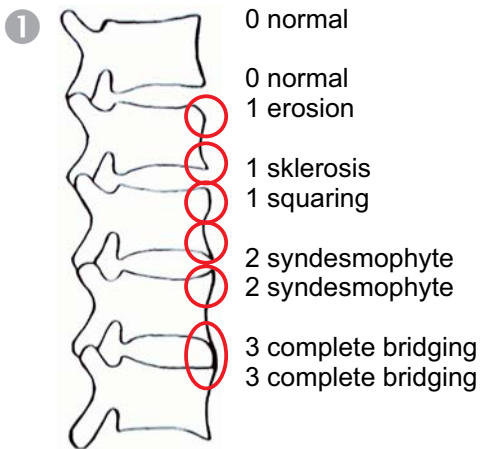
In lateral X-rays of the cervical and lumbar spine the anterior corners of the 24 sites from the lower border of the 2nd cervical vertebra to the upper border of the 1st thoracic vertebra and from the lower border of the 12th thoracic vertebra to the upper border of the sacrum are assessed according to the examples of ① and ②.

Mark assessments in the corresponding fields of ③.

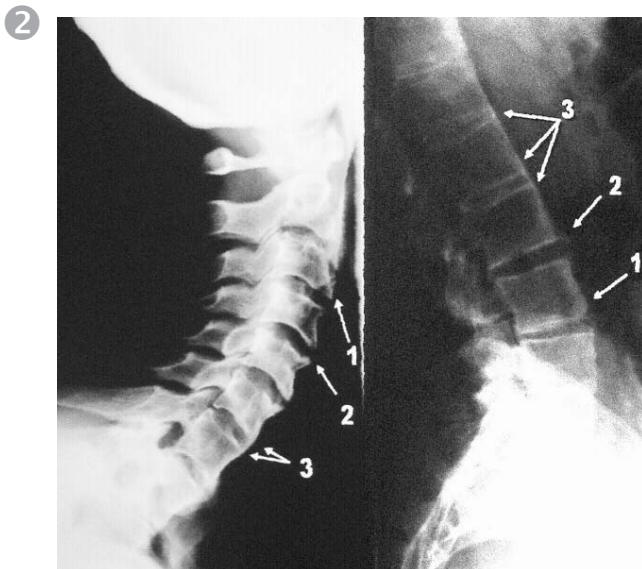
Count marks in each column and enter counts at ④. Sum of the four counts must be 24.

Enter the 1-fold, 2-fold, or 3-fold of sum values, respectively, at ⑤.

The resulting total sum is the m-SASSS.



Source: Creemers M C, Franssen M J, van 't Hof M A, Gribnau F W, van de Putte L B, van Riel P L  
Ann Rheum Dis 2005;64:127-129)



Source: Baraliakos X, Listing J, Rudwaleit M, Brandt J, Sieper J, Braun J  
Ann Rheum Dis 2005;64:1462-1466

③

	0	1	2	3
C2				
C3				
C4				
C5				
C6				
C7				
T1				

T12				
L1				
L2				
L3				
L4				
L5				
S				

④

..... x 0 =	0
..... x 1 =	
..... x 2 =	
..... x 3 =	

Check: sum must be 24

⑤

total = m-SASSS =

## Ankylosing Spondylitis International Federation

World-wide network of societies of patients suffering from ankylosing spondylitis or related diseases

[www.spondylitis-international.org](http://www.spondylitis-international.org)